

# THE GREYHOUND

## A Study Guide to the AKC Breed Standard



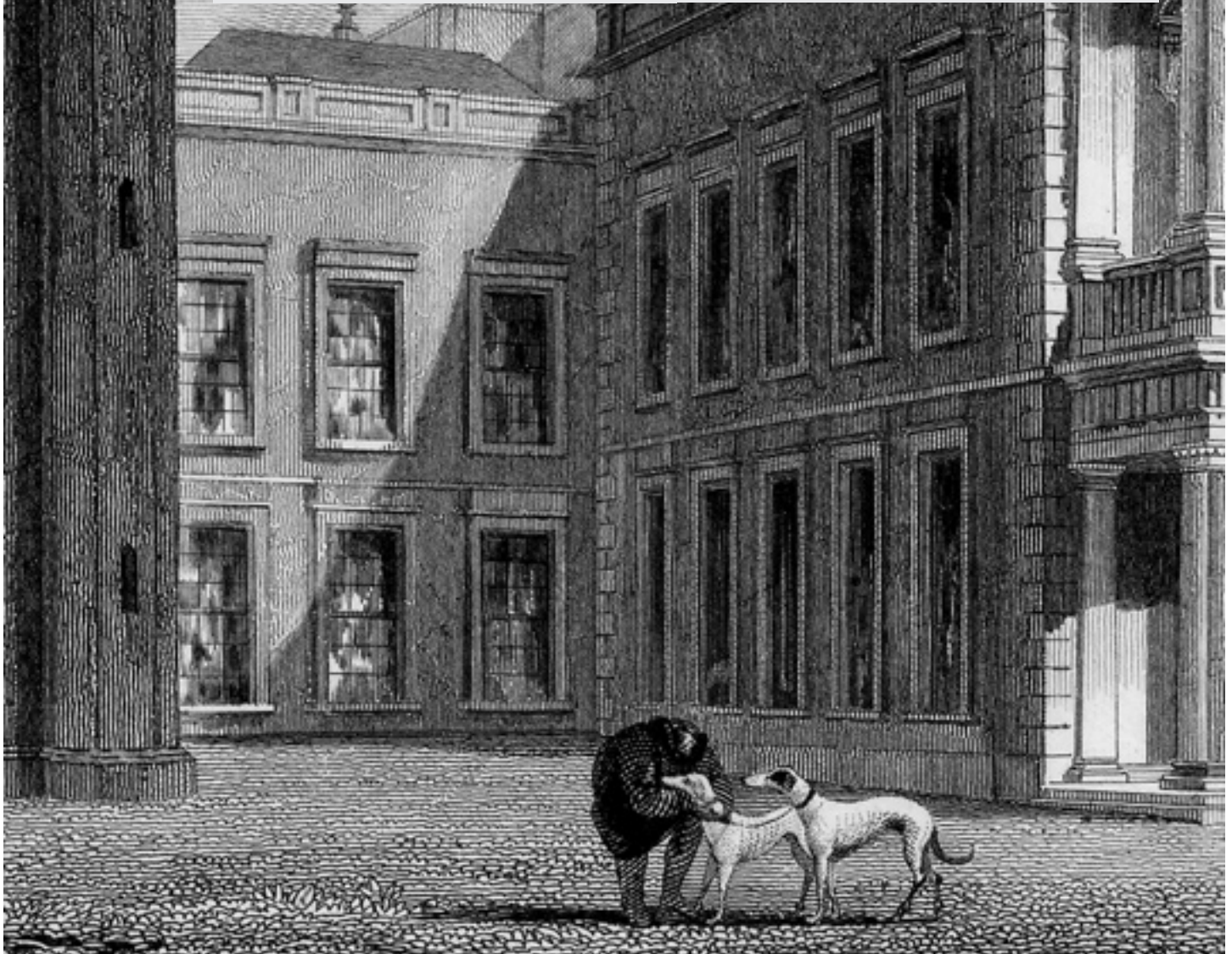
Celebrano, Francesco 1729-1814. Ferdinand IV of Bourbon with his court hunting party





# CONTENTS

<b>THE AKC BREED STANDARD</b>	<b>3</b>	<b>BACK</b>	<b>10</b>
<b>The Breed Standard Illustrated</b>	<b>3</b>	<b>LOINS</b>	<b>11</b>
<b>INTRODUCTION</b>	<b>4</b>	<b>HINDQUARTERS</b>	<b>12</b>
<b>ORIGINS</b>	<b>4</b>	<b>FEET</b>	<b>13</b>
<b>APPEARANCE</b>	<b>5</b>	<b>TAIL</b>	<b>13</b>
		<b>COAT</b>	<b>14</b>
		<b>COLOR</b>	<b>14</b>
		<b>WEIGHT</b>	<b>14</b>
<b>THE STANDARD: PIECE BY PIECE</b>	<b>6-14</b>	<b>SUPPORTING INFORMATION</b>	
<b>HEAD</b>	<b>6</b>	<b>GAIT</b>	<b>15</b>
<b>EARS</b>	<b>6</b>	<b>TEMPERAMENT</b>	<b>16</b>
<b>EYES</b>	<b>7</b>	<b>CONCLUSIONS</b>	<b>16</b>
<b>NECK</b>	<b>8</b>	<b>The Double Suspension Gallop</b>	<b>17</b>
<b>SHOULDERS</b>	<b>8</b>	<b>Representative Greyhounds</b>	<b>18</b>
<b>FORELEGS</b>	<b>9</b>		
<b>CHEST</b>	<b>10</b>		



Drawn by J. Harwood

SOUTH FRONT OF KNOWSLEY HALL  
Fisher, Son & Co. London 1829

engraved by J.B. Allen

The Greyhound Club of America Education Committee and the Education Resources Committee have put this booklet together in an effort to help judges, aspiring judges, and other interested parties understand and appreciate our breed.

Sheryl Bartel Linda Bell Patti Clark Maureen Lucas June Matarazzo Pamela Noll Mary Trubek

## ***The AKC Breed Standard for Greyhounds***

**HEAD** - Long and narrow, fairly wide between the ears, scarcely perceptible stop, little or no development of nasal sinuses, good length of muzzle, which should be powerful without coarseness. Teeth very strong and even in front.

**EARS** - Small and fine in texture, thrown back and folded, except when excited, when they are semi-pricked.

**EYES** - Dark, bright, intelligent, indicating spirit.

**NECK** - Long, muscular, without throatiness, slightly arched, and widening gradually into the shoulder.

**SHOULDERS** - Placed as obliquely as possible, muscular without being loaded.

**FORELEGS** - Perfectly straight, set well into the shoulder, neither turned in nor out, pasterns strong.

**CHEST** - Deep, and as wide as consistent with speed.

**BACK** - Muscular and broad

**LOINS** - Good depth of muscle, well arched, well cut up in the flanks.

**HINDQUARTERS** - Long, very muscular and powerful, wide and well let down, well-bent stifles. Hocks well bent and rather close to the ground, wide but straight fore and aft.

**FEET** - Hard and close, rather more hare than cat-feet, well knuckled up with good strong claws.

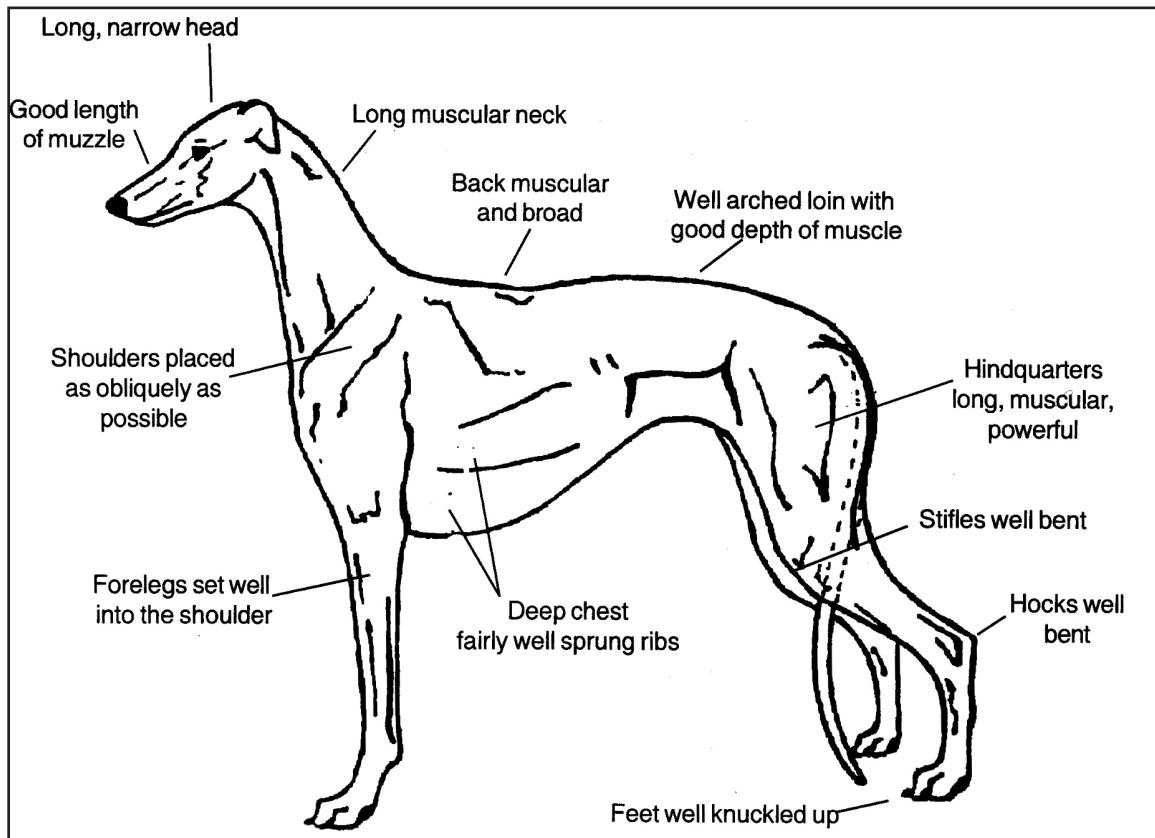
**TAIL** - Long, fine and tapering with slight upward curve.

**COAT** - Short, smooth and firm in texture.

**WEIGHT** - Dogs, 65 to 70 pounds; Bitches, 60 to 65 pounds.

### **Scale of Points**

General symmetry and quality.....	10	Back.....	10
Head and Neck .....	20	Quarters.....	20
Chest and Shoulders.....	20	Legs and Feet.....	20
Total.....	100		





## THE GREYHOUND

The Greyhound is a sighthound and one of the oldest of breeds. Sighthounds pursue running game following by sight rather than by scent. The attributes of speed, agility, strength, and endurance are necessary to take and hold game. The feature that distinguishes Greyhounds (and other sighthounds) from other breeds is their ability to run at speeds of 35 miles per hour or more using the double suspension gallop. The Greyhound demonstrates the double suspension gallop in its highest perfection. The incredible speed of the Greyhound comes from the singular combination of skeletal structure, musculature, and the ability to focus completely on the object of the chase. The form of the Greyhound reflects the requirements dictated by the function of an efficient running machine: its segments are interconnected in such a way that the size, shape, and placement of each bone and muscle affect the overall conformation and athletic ability of the dog.

### ORIGINS

The Greyhound is unique in the dog kingdom in that his precise beginning cannot be linked to either a place or a date. By the time the Greyhound is written about as a breed, he is already known throughout the ancient world as a swift hunter. Evidence of his wide distribution and purpose comes from ancient art and texts. From 6000 BC in Turkey, a sanctuary wall decorated with greyhound-type dogs has been found and from 4200 BC greyhounds were depicted on a funeral vase found in Susa, Elam (southern Iran). In 1350 BC, greyhound-like dogs were mummified and buried in tombs, and a 5th century BC Greek vase depicts a greyhound-like dog with rose ears accompanying a mounted horseman carrying spears.



UCCELLO, PAOLO

SCENE FROM: THE HUNT IN THE FOREST

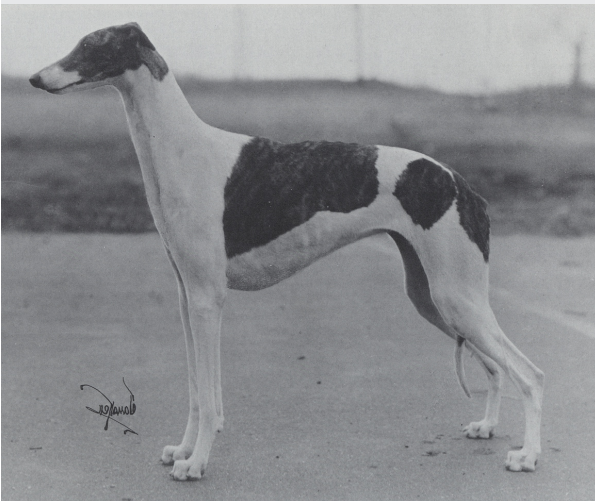
1460s

The first known written use of the word *greihund* occurred in 1210 in a document that was added to the earlier Forest Laws of England's King Canute. These laws set aside forest areas for hunting by the nobility, and no common man or dog was allowed to enter. Medieval castle manuscripts throughout Europe and Asia document hunts with large packs of Greyhounds, recording the dogs used and the variety of prey including deer, stag, hare, foxes, and the occasional bear and boar. Royal hunting packs were large, with Greyhounds of varying sizes. Different sized hounds were released, with the choice depending on the prey that was encountered. In 1370 Edmund de Langley wrote the first breed standard and hare coursing became increasingly popular in England. In 1650 Queen Elizabeth had formal rules drawn up for coursing game. In these coursing events, dogs were matched against each other and against the hare; testing speed, agility, and endurance in the open field. The Greyhound of today is descended from these English coursing and hunting dogs. Greyhounds were one of the first breeds registered with the AKC, included in the second edition of the stud book, in 1885. The first Westminster catalog from 1877 includes the entry of 18 Greyhounds.



What other ancient breed was so popular, adaptable and so useful? Normally, the country of origin gives many clues into understanding a breed – what is the prey, the climate, the terrain, for which the breed was derived? For the well-traveled Greyhound, these factors are diverse and many are unknown. Since the ancient breed could be found from Celtic lands to Africa, much can be made of his ability to adapt and diversify. From antiquity, the emphasis in Greyhounds has been on quality and ability, which were deemed more important than uniformity. There has always been variety in the breed, from the hound that hunts the 400 pound wild boar which turns to fight, to the hound that hunts the four pound hare which uses speed and agility as its only defenses.

In a breed in which antiquity and variety in geography and prey understandably allow for variations in type, style, and size, what can we look for to help us assess the individual dog in a show ring? The AKC Standard, adopted in 1929, is modeled on an early English version that was written to describe the running dogs of the day that were competing in organized coursing events. While it can seem brief and less than specific, it was assumed that the dynamics of the double suspension gallop were understood and familiar to the reader. The AKC standard is generous and open, allowing for the proper variety that has traditionally existed in Greyhounds. This must never be confused with an acceptance of mediocrity or impropriety. This is a breed that walks a tightrope between extremes. The Greyhound must not tip too much towards strength as he can become cumbersome, heavy, and common. Nor must the Greyhound tip too much towards refinement, and risk becoming insubstantial, weedy, and weak. The balance of strength and elegance, speed and grace must always define the breed. This is not a blueprint breed, nor one with formulas. Harmony of parts that flow seamlessly together, with quality and nobility throughout, should combine with a strong yet agile footstep.



## APPEARANCE

The AKC standard has no “general appearance” section. On first impression, terms such as tall, sleek, elegant, curvaceous, keen, powerful, smooth, well-muscled, as well as has hard feet, a whip-like tail and stands over a lot of ground, are brought to mind. Most notably, though, the Greyhound is stamped with elegant nobility. Greyhounds are a beautiful breed. In a mixed crowd of dogs, even among sighthounds, the plainest of Greyhounds will stand out as a pretty dog. A well balanced Greyhound of proper conformation will present a beautiful picture from any angle, at rest or in motion. However, sometimes breeders and judges become blinded by the pretty aspects of the breed, and begin to overlook some of the essentials that contribute to the make up of a strong, sound, well-functioning animal that complies with all aspects of the written standard.

In the standard, muscles are called for five times, and must be present and of good quality, being smooth and flat, never bunched. The dog should look strong and powerful, and yet simultaneously swift and agile. Good transitions are paramount – this is not a ‘pieces and parts’ breed, but rather one of seamless, harmonious curves blending one into another. While the show ring does not allow for nor evaluate the gallop, it **MUST** be remembered that the working gait of the Greyhound is the double suspension gallop, and the dog must always seem as if he might gallop, and certainly that he could gallop. 🐕

## AKC GREYHOUND STANDARD DISCUSSION

The AKC Standard verbiage appears in bold typeface, the discussion appears in normal typeface.

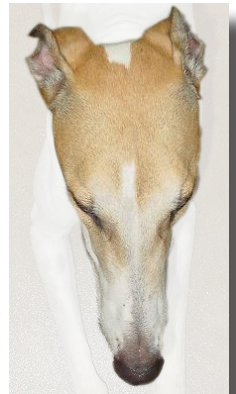
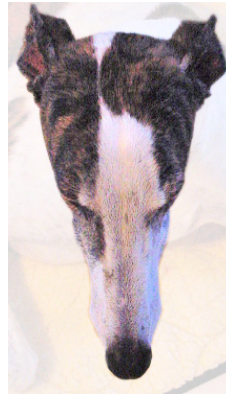
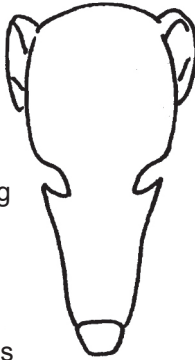
**HEAD - Long and narrow, fairly wide between the ears, scarcely perceptible stop, little or no development of nasal sinuses, good length of muzzle, which should be powerful without coarseness. Teeth very strong and even in front.**

The head, eyes, and ears should all contribute towards an expression that is keen and aristocratic. Natural head carriage at the trot is fluid, with the head positioned forward and slightly above the topline in a comfortable position. Head and neck will form a graceful forward curve. Greyhounds do not trot with their heads upright like Afghans or Salukis.

The head of the Greyhound is aristocratic, long, clean and comparatively narrow, and the proportions between the muzzle and the skull should be approximately equal in length. In profile, the head should exhibit two nearly parallel planes, the one of the back skull and the other of the foreface. The backskull is flattened on top, with minimal development of the frontal bone of the brow. The backskull forms the “fairly wide” part of the head and is widest just before the ears and narrows slightly toward the eyes. The occiput is scarcely perceptible. It is the shape of the backskull that has led observers to liken the Greyhound head to that of a snake. Both of the illustrations below show correct head shapes. The left drawing shows a longer more oval backskull with somewhat shorter muzzle length, the one on the right shows a shorter, squarer backskull with a longer muzzle. Both drawings indicate that the occiput is not well defined. Heads may come with a long oval backskull *and* a long muzzle.

The muzzle should be finely chiseled, especially directly in front of the eyes where there is little development of the maxillary bone beneath orbits. This gives the Greyhound especially efficient forward vision.

While the muzzle is not as wide as the backskull, it must be long and allow the jaws to open widely enough to grasp prey. There must be sufficient width, top and bottom, to allow room for the strong teeth. The underjaw should be well defined and strong and give a clean, smooth look to the muzzle. The meeting of the skull and underjaw at the jaw hinge is well muscled and rounded. Notice the long muscling that extends down onto the neck. The strength in the jaws and neck of a well - muscled Greyhound is quite amazing. The lips should be tight and clean.



The bite of the Greyhound should be strong and even in front. A scissors bite or a level bite is acceptable. Overshot and undershot bites could impede the ability to grasp prey and are incorrect.

The standard does not call for counting teeth.



**EARS - Small and fine in texture, thrown back and folded, except when excited, when they are semi-pricked.**

The Greyhound has “rose” ears. They are placed slightly higher than the level of the eyes and lie folded neatly against the neck when relaxed. The fine texture of the leather allows for the ears to be pulled up and forward with the top half folded towards the sides forming an inverted “V” when alerted (semi-pricked), resembling gull wings. The ears should be set on neither too high and close together, nor set on so low as to look droopy. Prick ears are undesirable.

The Greyhound's ears are quite mobile and can flop or tip forward if the object of attention is down close to the feet. Baiting a Greyhound to see erect ears is not necessary. If one feels it necessary to see the natural shape of a dog's alerted ear, an object should be tossed about ten feet away. Many times, however, this is a futile effort as this breed is quite independent and frequently will not respond as desired.



## **EYES - *Dark, bright, intelligent, indicating spirit.***

There are THREE adjectives that describe the eye. While just one word describes color, two adjectives describe an intelligent, keen countenance. No single element may be given priority over the others. While a dark eye is preferred, it is considered acceptable if the eye color complements the color of the coat and contributes to desirable expression.

The Greyhound eye is oval in shape and obliquely placed in the skull. When alerted to game, the expression is very sharp and piercing and has been likened to that of a bird of prey. When not intent on the object of the chase, the eye is bright, willing, and displays a curiosity in his surroundings.

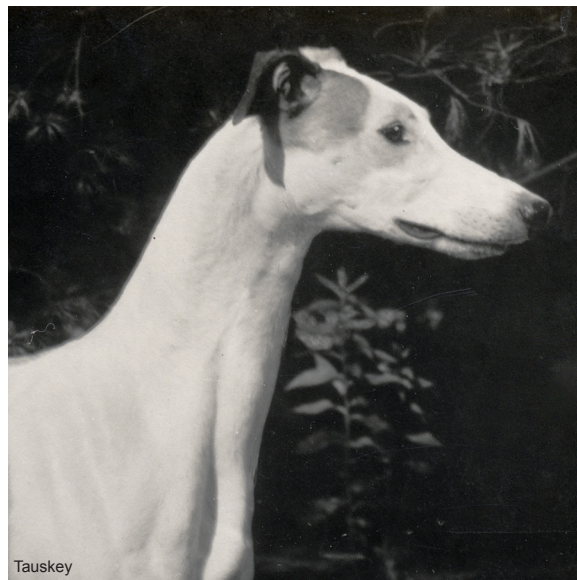
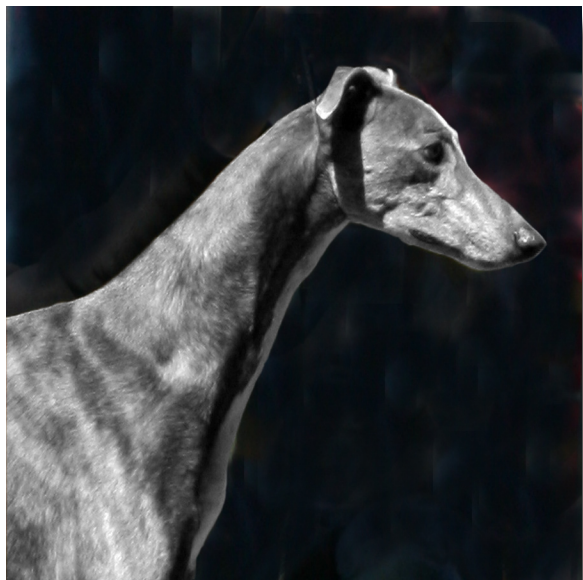


## **A range of desirable heads**



**NECK - Long, muscular, without throatiness, slightly arched, and widening gradually into the shoulder.**

The neck is long, strong and gently arched with muscle, flowing and widening smoothly into the shoulders and withers. There should be no hint of a bulge in the throat forming an undesirable ewe neck; and no excessive loose skin in the throat. A well-attached neck is associated with a good lay-back of shoulders, and will be set well back onto the body with the rise at the withers barely perceptible.



**SHOULDERS - Placed as obliquely as possible, muscular without being loaded.**



As in a fine thoroughbred, the shoulders carry most of the weight of the Greyhound, and must be strong to provide a solid pivot point for agility at the high speeds achieved by the hound. The shoulder of the Greyhound must be well muscled and well laid back. The shoulder blades should be inclined toward one another as they approach the withers, separated by several finger widths at their upper attachment to the spine. A good oblique shoulder with good length of shoulder blade and equally long upper arm creates longer levers with greater power of leverage, and more space for the muscles. The muscles of the shoulder blade should be very long and flat. Those of the upper arm (humerus) are more defined, but the overall shoulder assembly should appear basically smooth yet firm. The muscle mass should not be too thick or bunchy. This causes a loaded shoulder, in which the elbows are forced out and away from the body.

A Greyhound with correct angulation and matching scapula and humerus lengths (shoulder and upper arm) will have a trotting gait that appears effortless, with an unmistakable elastic smoothness. A humerus (upper arm) shorter than the scapula lessens the length of stride, straightens the angulation of the forequarters, creates a rough gait at the trot, and can make a dog appear to have a deeper body. The angle formed by these two bones is rather open but should never be upright.



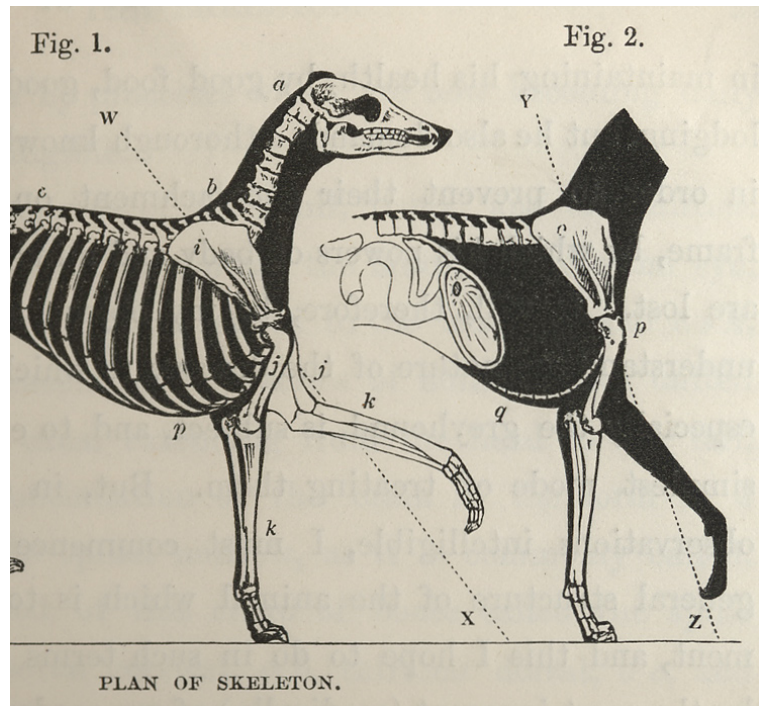


## AXIS OF THE SHOULDER

from Stonehenge  
On The Greyhound  
1875

Fig. 1. w, x, Axis of oblique Shoulder.

Fig. 2. x, z, Axis of upright Shoulder

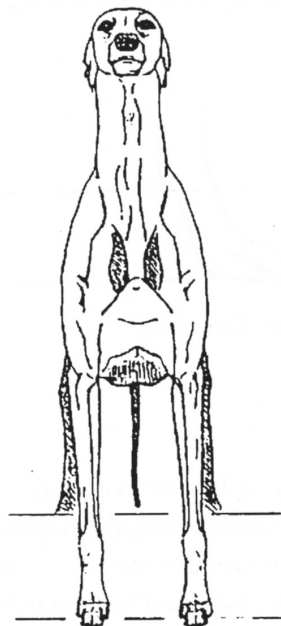


**FORELEGS - Perfectly straight, set well into the shoulder, neither turned in nor out, pasterns strong.**

Viewed from the front, the forelegs should be perfectly straight from elbow to foot. The forelegs are long, strong, and straight, and the bones, with their muscles and tendon attachments, form a bladed appearance. On a mature dog, the forelegs must be at least as long from elbow to ground as the body is from withers to elbow. The distance from the elbow to the knee also ought to be at least twice as long as from knee to the ground. Standing and in motion the elbows should be in line with the legs and upper arms, neither bowed out nor tied in under the chest.

Pasterns are very strong and flexible in order to function as shock absorbers. When viewed from the side, they are inclined slightly off vertical. Pasterns that are too long, too short, overly slanted or upright are incorrect and hinder the gallop. Pasterns should turn neither in nor out.

FRONT VIEW - Forelegs straight



SIDE VIEW - Pasterns Strong







**Greyhound Top View**

**Good rib spring**

**Broad muscular back and loin**

### ***CHEST - Deep, and as wide as consistent with speed.***

The point of the forechest should be even and on the same level with the forward point of the shoulder. There should be some front fill of the chest visible between the front legs. The sternum is long and extends well back with the deepest point of the brisket falling behind the elbow a few inches.

A chest that is capacious allows for good room for the powerful heart and lungs. This space results more from depth than width. The chest, if seen in cross-section, would be an elongated oval. The ribs spring out from the vertebrae to form a broad beam-like back with the well developed muscles in this area contributing to this appearance. Very long and well curved-back ribs give a relatively flat-sided appearance to the body - this appearance is not due to a lack of spring of rib. The rib cage should be very deep and carried well back. The ribs curve considerably to the rear. Because of the length of the sternum and the length of the rear ribs, the underline rises in a graceful curve to the rather small "waist".

Ribs must be sprung as "wide as consistent with speed" – in other words, too little spring (slab-sides), which do not allow enough chest expansion, are undesirable, as are overly-sprung ribs. A too-wide dog with barrel-sprung ribs is less agile, less flexible, and will not be aerodynamic nor have the endurance for the field. The chest must provide sufficient room for "the engine" of the running dog, while simultaneously not hindering the gallop with too much mass.



**Deep, capacious chest, rib cage carried well-back**

### ***BACK - Muscular and broad***

In the Greyhound standard, the back represents the dorsal (upper) surface of the dog from withers to the base of the rib cage (the thoracic portion of the spine). This portion of the spine is relatively level from the withers to the attachment of the loin muscles. The transition at the attachment of the loin muscles over the last three ribs blends smoothly into the arch of the loin. When in peak condition, strips of muscling on both sides of the back and over the loin will be evident, creating the broad, strong, well-arched top line that is distinctively Greyhound. The length of the thoracic portion of the back and the length of the loin may vary slightly but they are relatively similar in length. The proportions should result in a dog that looks strong, purposeful, and capable of the double suspension gallop.



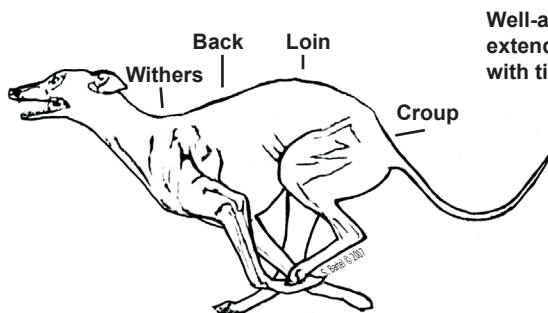


## LOINS - *Good depth of muscle, well arched, well cut up in the flanks.*

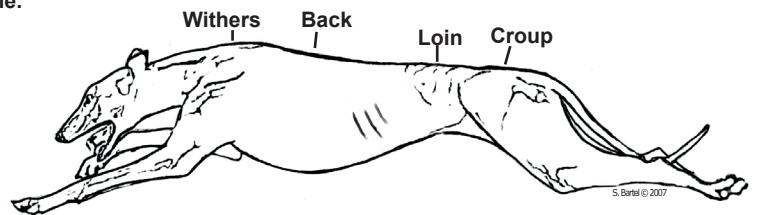
The loin is crucial to the double suspension gallop, acting as a coil to bring the hindquarters up under the rib cage, then having the flexibility and power to launch the dog forward into the extended phase of the stride. The loin must be well arched in top line and underline to give the Greyhound its characteristic power and shape. The loin must be of sufficient length to allow flexing as the dog moves from the folded position to the extended position at the gallop. The loin should flow smoothly from the thoracic portion of the back and have deep, broad, well-toned muscles to transfer propulsive power from the hindquarters.

A rigid, inflexible loin will not fully extend at the gallop. A dog with the rise starting at the withers, which would be considered a wheel back, will not fully extend. A flat loin will have to work much harder to contract at the gallop. All are incorrect and should not be considered good type.

The underline of the loin should be tight and firm with no hint of slackness. The dog should not look gutty. The Greyhound's underline should never be tubular, nor should there be a sharp transition and straight line from the end of the sternum to the loin (a herring gut). The silhouette of the smooth curves of the breed should be unique and identifiable. There should be no doubt that the Greyhound in profile is neither a Pointer, Doberman, Rottweiler, nor Whippet or Italian Greyhound.

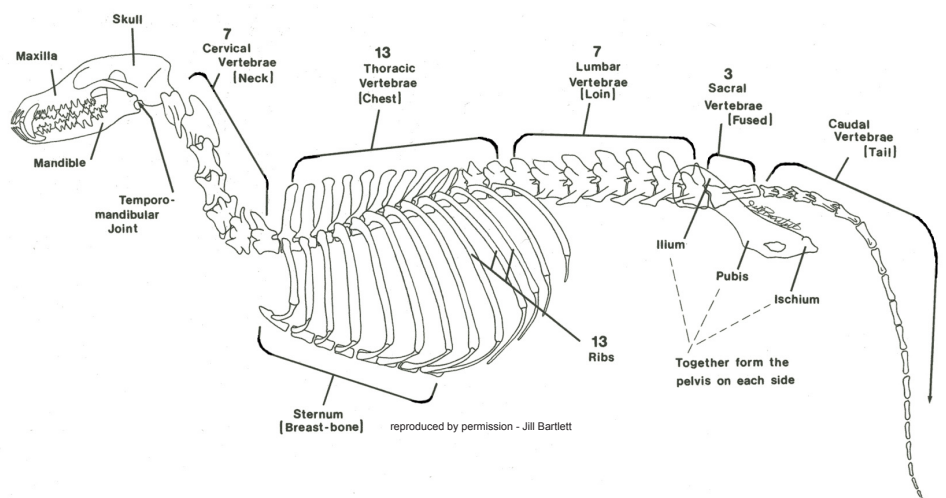


**Well-arched, flexible loin:**  
extended and contracted,  
with tight underline.



## SKELETAL ELEMENTS OF THE LOIN AND TOPLINE

The increasing height of the upper processes of the lumbar vertebra, along with the attached back muscles, creates the well-arched topline. The curve of the arch starts with the attachment of muscle mass above the last three ribs, is visually highest midway between the last rib and the hipbones, and falls off as the upper vertebral processes shorten in the sacrum.



**HINDQUARTERS - Long, very muscular and powerful, wide and well let down, well-bent stifles. Hocks well bent and rather close to the ground, wide but straight fore and aft.**

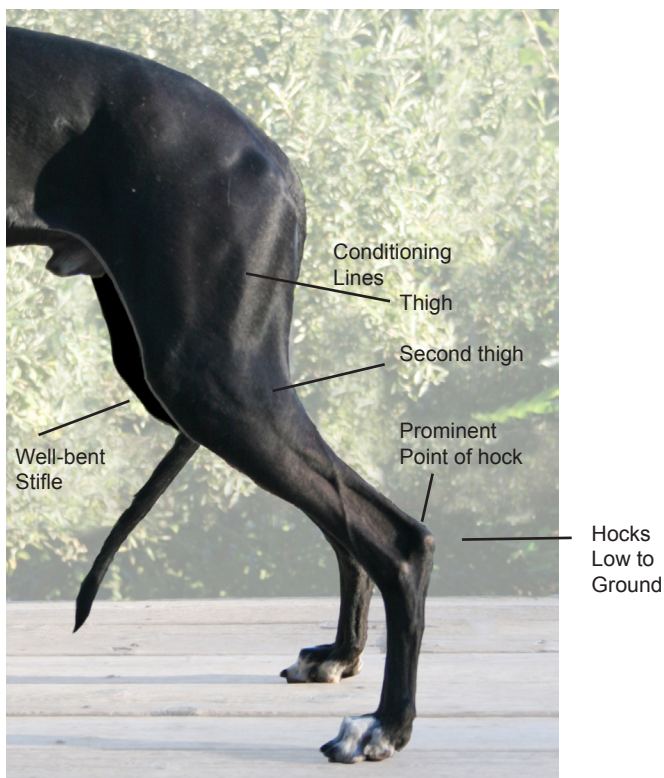
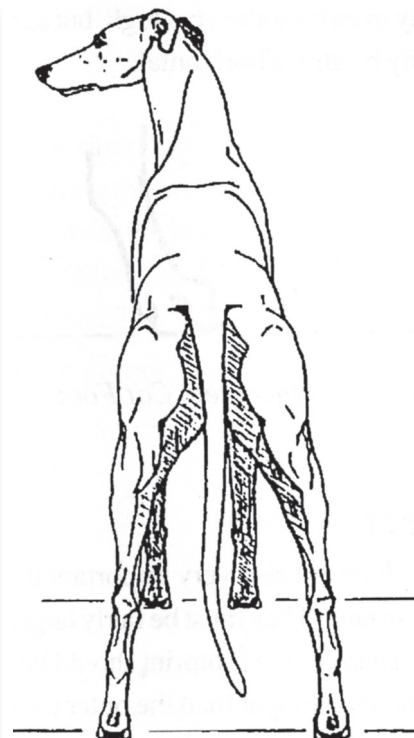
The hindquarters propel the gallop, and must be wide, long boned and well-muscled throughout. The four major parts of the hindquarters are: the pelvic bones which determine the length and slope of the croup, the upper thigh and the second thigh, which meet at the stifle, and the hock. In the Greyhound, these parts have developed over the past two thousand years to optimize power and agility at the double suspension gallop.

From the rear, the hindquarters will be wide, as the hind legs must come forward past the loin and the back of the rib cage at the gallop. The pelvis should be broad and long, sloping gently downward through the croup to the tail, which is set on low. The croup must be neither steep nor flat.

Quality muscle should be obvious with lines of conditioning present in thighs and second-thighs. The length of the upper thigh, and the length of the second thigh should be approximately equal. These bones should meet forming good bend of stifle, creating a balanced look. A significant difference in the length of these two bones is detrimental at the gallop. Over angulation or too little angulation through the stifle are both undesirable as neither will enable full propulsion.

The hock joints are fairly low to the ground and the point of the hock is prominent and long. The hocks should be short compared to the rest of the leg. Hocks deviating from the description above are incorrect.

As seen from behind, the bones from hip to foot should present a straight column of support, turning neither in nor out. Viewed in profile or from behind, the hindquarters should convey an impression of power and good support.



HINDQUARTERS -  
LONG  
VERY MUSCULAR  
POWERFUL



**FEET - Hard and close, rather more hare than cat-feet, well knuckled up with good strong claws.**

The necessity of good feet on a coursing hunting dog can not be overstated. The Greyhound's foot is distinctive in that it falls between a cat foot and a hare foot. The proper Greyhound foot forms a well knuckled oval with the middle toes somewhat longer than the outer two. This middle type foot has strength and flexibility, can open and close, and allows for good thick pads and toenails. A tight cat foot lacks flexibility needed to grasp ground. A long hare foot lacks strength and the ability to contract well on variable terrain. Flat, splay, or cat feet are incorrect.



GOOD  
FEET

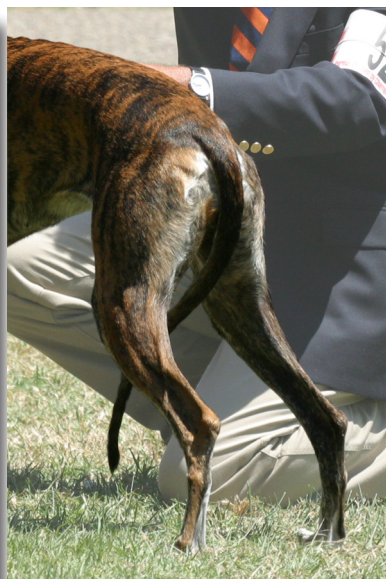
FRONT  
and  
REAR



**TAIL - Long, fine and tapering with slight upward curve.**

The tail serves as an important and useful rudder at the gallop. It should be long and tapering, in a gentle saber shape, curving upward at the end. It should be carried low at the trot, and may be raised when the dog is feeling ebullient. The set-on should be in graceful continuity with the croup, and not too high nor too low. The tail should never leave the body at an upward angle, and a curly tail is neither attractive nor desirable. There is no need to pull the tail between the legs or up to the hipbones. It is sufficient to visually check for length and taper and strong attachment of the tail. Many Greyhounds have tails that nearly touch the ground.

Greyhound tails can be fragile and may have breaks, injuries, bald spots, and be missing an inch or two, none of which should be penalized if they do not interfere with use.



TAILS

AT REST  
and  
GAITING

## **COAT - Short, smooth and firm in texture.**

The finest Greyhound coat has a satiny texture, short and fine. On a well conditioned Greyhound, the coat should feel like velvet over a rock. The coat should not feel harsh, cottony or wiry. A soft winter coat may thicken and dull the appearance, but at no time should the dog appear anything but smooth and fine coated. Working scars which can appear anywhere on the body should not be penalized.

## **COLOR - Immaterial.**

Greyhounds come in many colors, shades, and markings. There is an old adage that "A good Greyhound is never a bad color." This is certainly true. Greyhounds today, however, do not appear in black and tan such as in the Manchester, nor in the merle of the Australian Shepherd. One Greyhound should not be penalized in the ring for not having color or markings as attractive as another hound's. Judges may need to more carefully examine some specimens in the ring as some markings and patterns can fool the eye as to the true structure of the dog.



This bitch demonstrates how markings can be optically deceptive and misleading. Note how these spots can alter the look of the neck attachment, the topline and the croup. Hands-on examination is the best way to confirm the true structure beneath the markings

## **WEIGHT - Dogs, 65 to 70 pounds; Bitches, 60 to 65 pounds.**

Many Greyhounds seen in today's rings are larger than this stated weight. There is no fault or disqualification according to weight, or any other part of the standard. The AKC standard for Greyhounds is unchanged since it was accepted in 1929. (Very early on "well-arched" was moved from the description of back to the description of loin). As with the human population, the size of Greyhounds has increased with better health and nutrition and freedom from disease. As a dog that hunted deer, boar, stag, hare and rabbit, there has always been a range of sizes in the breed. The ability to make sharper turns after the more agile small game such as rabbits favors the smaller hound; strength and stamina to chase stag and deer favor the larger hounds. Size should not be the deciding factor in judging, as long as quality, beauty, strength, harmony of parts, and agility are evident. Quality comes in many sizes and weights, and is what must be sought.

### **SCALE OF POINTS**

<b>General symmetry and quality</b>	<b>10</b>	<b>Back</b>	<b>10</b>
<b>Head and Neck</b>	<b>20</b>	<b>Quarters</b>	<b>20</b>
<b>Chest and Shoulders</b>	<b>20</b>	<b>Legs and Feet</b>	<b>20</b>

**Total.....100**





**The following elements are not covered in the AKC Standard, but are discussed to provide insight into the complete Greyhound.**

## GAIT

There is no mention of gait in the standard. In the age when the standard was written, it seemed self-evident that the working gait of the Greyhound was the double-suspension gallop. However, the trot is part of show ring evaluation, and consequently deserves some words of guidance.

The Greyhound is built for galloping, and when he requires speed, he gallops. When actually out for a hunt, the trot is merely his “resting” gait as he looks for something to chase. A fast trot is not natural to him, though most Greyhounds can be trained to perform at this speed. It should be apparent that the Greyhound does not need to call upon many of his resources when trotting.



The trot of the Greyhound should be light and effortless, with long striding reach and feet low to the ground. This is not a trotting breed, so the gait is simple, purposeful, and without any exaggeration. Head carriage should be proud and comfortable, and neither strung up artificially high nor hanging low. Movement, whether in profile or coming and going, should be easy and elastic with the energy going to move the dog forward, never jarring or bouncing up and down. Front and rear legs should move cleanly without any breaks in the line of forward progress. The go-around is an opportunity to ascertain that the dog's shape is genuine and correct, and that he has not been stacked into a shape other than his true one. The Greyhound should hold his shape on the move, and though some toplines will level out slightly, the arch of the loin should still be evident.

The front is low stepping with minimal bend at the pastern, and the elbows are well knit to the body, turned neither inward nor outward. Viewed from the front, an unbroken line runs from withers to elbow, down the leg to the feet. The rear leg should come well forward under the ribcage, and the follow through should be purposeful. In motion, the legs tend to converge. This tendency may not be evident in smaller show rings where a Greyhound may only take four or five trotting strides before a turn. It will be more evident in larger rings where faster trotting speeds are possible.

Incorrect gaits for Greyhounds include: hackney, pounding, elbows winging out or tied in, hind feet overreaching the front feet, kicking out behind, side winding, rope-walking, or stilted gaits.



Front  
Low stepping  
Elbows well knit to body



Rear  
Legs tending to converge  
while in motion



## TEMPERAMENT

It is normal for the Greyhound to show little interest in performing in the show ring. He is a reserved dog, not much interested in strangers, but willing to submit for examination without being shy or fearful. He has great dignity and should be handled with an appreciation for this in mind. A flashy presentation should not supplant quiet excellence.

The Greyhound is very sweet and sensitive and makes a loving and devoted companion. It is his nature to be affectionate and docile except when his well-developed instinct for the chase is aroused. He has the faculty of complete concentration on the object of his pursuit, with little concern for personal safety. He totally entrusts his well-being to his owner and when the chase is over he is quite content to return to his master and his couch.



## CONCLUSIONS

The Greyhound should always be an aristocrat among dogs. His bearing is noble, his countenance keen, and his body strong. His appearance conveys a perfect combination of strength and speed. Dogs should be recognizably masculine, and bitches should convey unmistakable femininity. All Greyhounds should move with purpose, lightness, and grace. There are historic and understandable reasons for the differences in style and size in the breed. The point of evaluation must always be to find the Greyhound that best satisfies all of the few, but very important requirements set forth in the standard. That Greyhound will balance strength and beauty, and look the part of the breed that has graced the fields and the hearths of nobility for centuries. 🐾🐾🐾



Howett 1812



## DOUBLE SUSPENSION GALLOP



The working gait of the Greyhound is the double suspension gallop, during which the dog is completely suspended off the ground at two points in the galloping sequence. The topline and underline must have the flexibility and the strength to act as a coil to propel the dog forward at great speed. Compare the above dog standing and galloping to see how all parts of a Greyhound must work in balance and harmony.

FOLLOW THE GALLOPING SEQUENCE CLOCKWISE.....

1



2



3



4



5

6

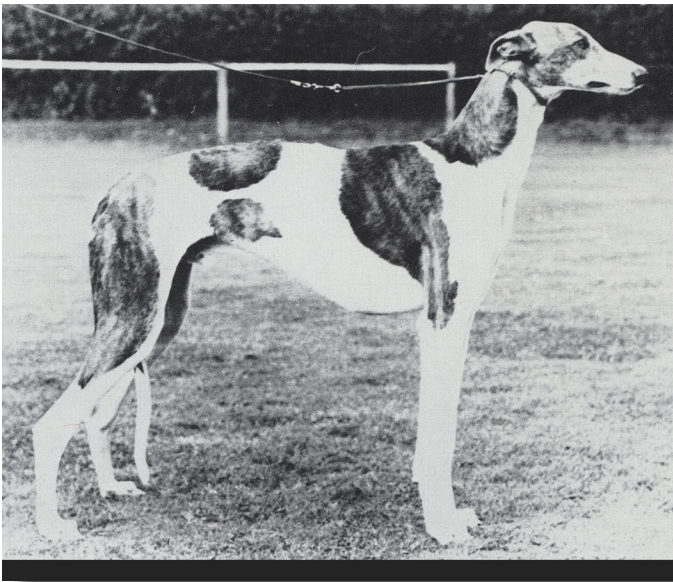


## A SELECTION OF OUTSTANDING GREYHOUNDS

The following are representative Greyhounds from the past, all conforming to the standard, but illustrating the range of appearance which is acceptable. This is by no means a complete collection of all of the best, but was selected to demonstrate the variety seen in good animals.











From the *Boke of Saint Albans*

**A GREYHOUND SHOLD BE  
HEEDED LYKE A SNAKE  
AND NECKYD LYKE A DRAKE,  
BACKED LYKE A BEAM,  
SYDED LYKE A BREAM,  
FOOTED LYKE A CATTE,  
TAYLLD LYKE A RATTE.**

This rhyme is attributed to Dame Julia Berners, the abbess of Sopewell Nunnery and was written in 1486. It gives a description of the Greyhound which is perhaps the most concise statement of the fundamental essentials of the breed throughout history.

